

DECEMBER 2012

Spitzer School of Architecture
City College of New York
141 Convent Avenue
New York, NY 10031
212.650.6751

TONI L. GRIFFIN
Director, J. Max Bond Center

ESTHER YANG
Associate Director, J. Max Bond Center

GEORGE RANALLI
Dean, Spitzer School of Architecture

CENTER SNAPSHOT

8 MONTHS IN OPERATION

5 PROJECTS

4 RESEARCH INITIATIVES

3 NEW COURSES IN ARCHITECTURE & URBAN DESIGN

1 ARTICLE PUBLISHED EXHIBIT ON DISPLAY GRANT RECEIVED

231 f Like

68 COUNTRIES REACHED

24 STATES REACHED

64 US CITIES REACHED

276 INDIVIDUALS REACHED MONTHLY (AVERAGE)

89% IN THE US 11% INTERNATIONALLY

COUNCIL OF ADVISORS

GORDON DAVIS
Partner, Venable, LLP

STEVEN M. DAVIS
Partner, Davis Brody Bond

REESE FAYDE
Principal, Reese Fayde & Associates

GORDON KIPPING
Principal, Gtects

KAREN PHILLIPS
Regional Director, New York State Parks

JAMES POLSHEK
Design Counsel, Ennead Architects

LOLA C. WEST
Managing Director, West Fuller Advisors, LLC

THOMAS WRIGHT
Executive Director, Regional Plan Association

FACULTY AFFILIATES

DENISE HOFFMAN BRANDT
Director of Graduate Landscape Architecture Program, Associate Professor

HILLARY BROWN
Director of M.S. in Sustainability Program, Professor

BRADLEY HORN
Director of Graduate Architecture Program, Assistant Professor

MICHAEL SORKIN
Director of Graduate Urban Design Program, Distinguished Professor

STAY CURRENT AT:

www.ssa1.cuny.cuny.edu/programs/jmaxbond.html

www.facebook.com/JMaxBondCtr.DesignForTheJustCity

MISSION

The J. Max Bond Center on Design for the Just City, at The Bernard and Anne Spitzer School of Architecture, is dedicated to the advancement of design practice, education, research and advocacy in ways that build and sustain resilient and just communities, cities, and regions.

ANNOUNCEMENTS



J. MAX BOND CENTER LAUNCH

The Center officially opened its doors May 1st, 2012 in honor of the former architecture Dean to advance the role of design in making cities more livable and inclusive.

Over 350+ supporters came out to celebrate the Center's opening. The evening served to introduce the Center's Director, Toni L. Griffin, provide an overview of its mission and activities, and announce initial private gifts. CUNY Chancellor Matthew Goldstein, City College of New York President Lisa S. Coico, Spitzer School Dean George Ranalli, Jean Bond, Max Bond's widow, and Steven M. Davis, FAIA, of Davis Brody Bond offered brief remarks.

"We couldn't be more thrilled to honor our friend and colleague Max Bond by creating a place within the school of architecture where the intersection of design education, research and practice can be explored and applied in our cities," said Dean George Ranalli.

The son of two educators, including a father who was a Dean at Tuskegee Institute, Max Bond rose to become one of the most influential African-American architects of his time. Mr. Bond, who passed away in 2009 at age 73, served as Dean of City College's School of Architecture and Environmental Studies, now The Bernard and Anne Spitzer School of Architecture, from 1985 to 1992.

"We want the center to be a leader in thinking on how design can become more central to the policies aimed at making American cities more just and inclusive places to live," said Professor Griffin. "Max Bond believed that social uplift and social inclusion should be an inherent part of the design goal, so we want to build a program agenda for the center that tackles that aspiration."

Davis Brody Bond partner, Steven M. Davis, presented the Center with its first major gift, \$100,00, to be used to support the Center's operations and programming.



J. MAX BOND SCHOLAR

The Bond Family generously donated \$50,000 towards an annual scholarship that will support an exceptional student fellow to work in the J. Max Bond Center on urban projects, research, workshops, conferences, and publications that promote the Center's mission.

Our first scholar is Michele Flournoy. A California native with a fascination with cities, and passion towards grass-root efforts. She is currently a 2nd year degree candidate in the Master of Architecture program here at CCNY. Her background includes a major in marketing and international business and involvement in community design work in Yantalo, Peru. She has spent extended periods of time there working with the community and harnessing their optimism and strength to improve daily life for its residents, which includes volunteer design efforts towards an international-caliber medical center with the Yantalo Foundation.

"WHAT IS DESIGN FOR A JUST CITY?"

Issues of equity, inclusion, race, justice, access, and connection are still unresolved in many American communities, leaving a context of urban landscapes where the work of uplifting people and place remains a large task. To help inform our initiatives that seek to build and sustain resilient and just communities, cities, and regions, the Center launched a postcard initiative that collected 269 responses from high school students, CCNY students, CCNY faculty, and J. Max Bond Center visitors as well as public engagements to gauge community thoughts about what a "Just City Must Have..." Initial findings were reported on November 29, 2012 as part of the "(In)equality" Colloquium sponsored by the CUNY Graduate Center and J. Max Bond Center.

Here are a few things we learned...



DESIGN DEMONSTRATIONS

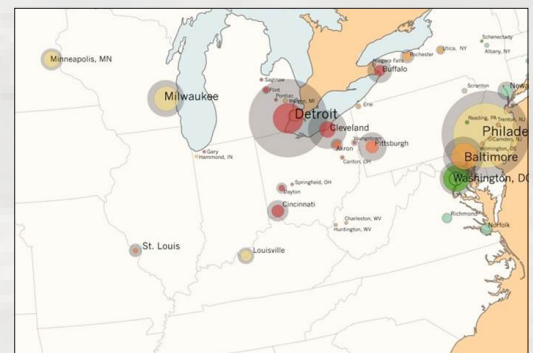


NEWARK SUSTAINABILITY INDICATORS

In the process of updating the Master Plan, the City of Newark requested a metric to measure and track the effectiveness of policy and strategy decisions. As a result, a partnership was formed between the Jonathan Rose Companies, the J. Max Bond Center, and graduate capstone students from City College of New York's Master of Sustainability program to establish a set of indicators and baseline data to evaluate Newark's progress towards its future.

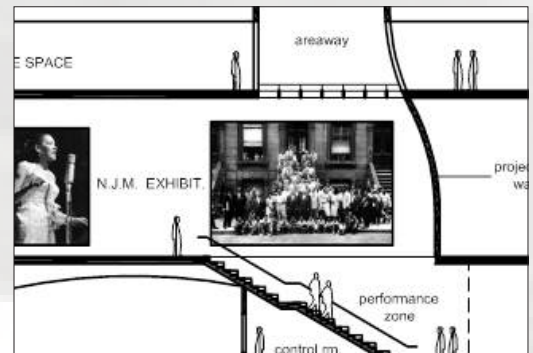
The Newark Sustainability Indicators Program presents 17 Indicators and 58 measures across three key improvement areas to assess the City's current status, track its change, provide insight into the effects of present policies, and provide guidance for what needs further attention.

1. Economic Indicators will evaluate if the City improves in providing residents (current and future) with a range of jobs and business opportunities, support work-life satisfaction, and promote long-term household prosperity.
2. Health and Safety Indicators will assess how quality of life issues including home ownership, public safety, and walkability are improved to promote visible and self-sustaining improvements, support tight-knit community life, and promote the health and well-being of its residents.
3. Environmental Indicators will assess Newark's competitiveness in the region by evaluating factors including access to education, health and cultural amenities and the quality of human and environmental health.



LEGACY CITY DESIGN INITIATIVE

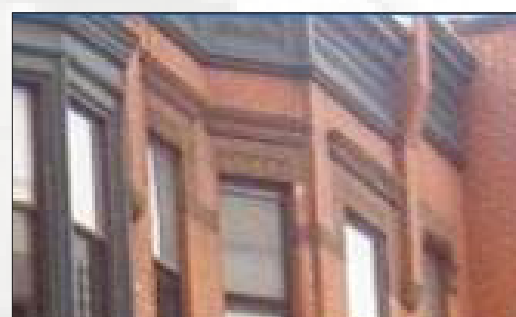
The sense of urgency impressed upon us by our nation's imminent physical and social challenges of sprawl, abandonment, blight, equity, inclusion, and justice led the J. Max Bond Center to pursue a partnership with the American Assembly at Columbia University to advocate design as a vehicle towards restorative initiatives. The partnership will conduct research and convenings on innovative design interventions and practices that evaluate urban conditions, reposition vacant and abandoned properties, and modernize systems of infrastructure and civic participations in cities experiencing rapid population decline.



UPPER MANHATTAN EMPOWERMENT ZONE MART 125 PROJECT

Upper Manhattan Empowerment Zone (UMEZ) hired the J. Max Bond Center to provide design advisory services in the development of a new national jazz museum in Harlem. The Center assisted UMEZ in developing the architect's scope of work and preliminary design review.

COLLABORATIVE RESEARCH



JUST HOUSING

In the midst of financial strain and immense housing needs, the affordable housing industry is being forced to re-evaluate its current practices and define new ways to provide housing and healthy communities for working-class individuals. This spring, the J. Max Bond Center will join with SSA Professor Julio Salcedo Fernandez in a research seminar to investigate design and construction practices that can help the housing sector alleviate the rising costs of housing development and property operations and improve the public perception and identity of subsidized/social housing. The seminar allows

students to interact with multiple development and housing management professionals to harness a new mode of design thinking and innovations to meet future housing objectives.

DIALOGUES



(In)equity Matters: The Enemy Between Us, Richard Wilkinson and Toni L. Griffin, The Graduate Center, CUNY Elebash Hall
November 29, 2012

(In)equity and Design Colloquium – J. Max Bond Center, Spitzer School of Architecture
November 29, 2012

Culture Now Symposium – Pratt Institute
November 8, 2012

OpenLands 2012 Annual Luncheon, Toni L. Griffin Keynote Speaker, Chicago, IL
October 25, 2012

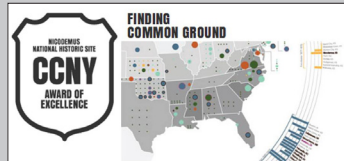
Municipal Arts Society of New York Summit 2012, Election 2012 What's at Stake: The Federal Government and the Future of New York City Panel
October 19, 2012

National Organization of Minority Architects 40th Anniversary Conference, Detroit, MI
October 18-20, 2012

The "Barber of Birmingham" Panel Discussion, City College of New York
October 3, 2012

2012 American Society of Landscape Architecture Annual Conference, Legacy Cities & Innovative Landscape Panel
September 28, 2012 – October 01, 2012

UPCOMING EVENTS



NICODEMUS EXHIBIT LAUNCH RECEPTION

Thursday, January 31, 2013 -- 6:30pm

The J. Max Bond Center will display the CCNY Spitzer School of Architecture landscape design studio winning entry from the Van Alen Institute and the National Park Service competition, "Parks for the People: A Student Competition to Re-imagine America's National Parks."

The exhibit will display the award-winning designs for a National Historic Site in Nicodemus, Kansas. The Van Alen Institute and the National Park Service assembled the competition to call on student and faculty teams to use design as a catalyst to re-imagine America's most spectacular public places. To do that, teams focused on one park site, provided opportunities for interdisciplinary collaboration, developed community partnerships, and envisioned a new generation of healthy, welcoming, and enduring national parks.

STAY CURRENT AT:

www.ssa1.cuny.cuny.edu/programs/jmaxbond.html

www.facebook.com/JMaxBondCtr.DesignForTheJustCity

ANNOUNCEMENTS continued...



NACTO: URBAN BIKEWAY DESIGN GUIDELINES

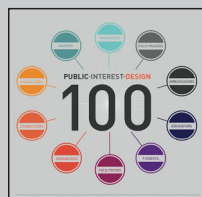
The J. Max Bond Center will serve on a team of experts, headed by the transportation planning firm Nelson Nygard, to assist the National Association of City Transportation Officials in developing Urban Bikeway Design Guidelines. The team will work to build multimodal streets, create policies that support building such streets, and convey street design information.

See official press release

AWARDS & RECOGNITION



The Bond Center's first capstone team of Matthew Gruber, Caleb Stratton and Olivia Vien, took third place in this year's **MASTERS OF SUSTAINABILITY CAPSTONE** competition. The student team worked in partnership with the Jonathan Rose Companies to develop the program, which has been included in the city's updated Master Plan, recently adopted by the City's Planning Commission and City Council.



PUBLIC INTEREST DESIGN, an organization that is fostering a growing movement at the intersection of design and service has listed Toni L. Griffin and the J. Max Bond Center in its inaugural

"Public Interest Design 100" list as a policy maker influencing unresolved challenges in urban America. [Link to Public Interest Design](#)

THE COLIN POWELL CENTER FOR LEADERSHIP AND SERVICE awarded the J. Max Bond Center and the Harlem School of the Arts a Community-Based Participatory Research Grant to support collaborative research that will:

1. Expose underserved African-American and Latino youth to the design disciplines of visual art, architecture, urban design, and landscape architecture
2. Identify design opportunities to dissolve existing barriers and create stronger connections between the CCNY campus and its historic Harlem community
3. Identify opportunities to help the Harlem School of the Arts transition from an architectural design of barriers/exclusion, that "turns its back on community," to one that is more welcoming and attractive to youth and the community

Established in 1997, the Colin Powell Center seeks to prepare a new generation of leaders from populations previously underrepresented in public service and policy circles to build a strong culture of civic engagement, and to mobilize campus resources to meet pressing community needs.

The **VAN ALEN INSTITUTE** and the **NATIONAL PARK SERVICE** honored CCNY Spitzer School of Architecture for their works in "Parks for the People: A Student Competition to Re-Imagine America's National Parks." The Masters of Landscape Architecture team selected the National Historic Site in Nicodemus, Kansas. The student team grounded their project in the belief that the site was to remain relevant only if it continued to be tethered to the lives of its nation-spanning descendants. Finding that more visitors will likely encounter this small town online than in person, the studio boldly proposed the Nicodemus Web, a model that sustains the site through myriad relationships within and outside its resident community.

Denise Hoffman-Brandt, Director of the Graduate Landscape Architecture Program, led the CCNY team. The studio began with a multi-disciplinary charette in collaboration with the J. Max Bond Center on Design for the Just City other faculty members.

Finalist design proposals can be found online. www.nps.gov

COLLABORATIVE RESEARCH continued...



MINORITY PARTICIPATION IN ARCHITECTURE

The J. Max Bond Center, the Spitzer School of Architecture at City College (SSA), the Environmental Psychology department of the CUNY Graduate Center (GC), and the Harlem School of the Arts (HSA) will be developing two original research projects aimed to raise awareness of the design disciplines of architecture, landscape, urban design and planning among African-American and Latino youth.

The project will engage SSA, GC, and HSA students and faculty to investigate the following research questions:

1. What specific factors are limiting minority youth from entering the fields of architecture and allied design disciplines – both in the academy and in the profession?
2. How do people develop their perceptions about architecture and place? From what context do their perceptions originate? Specifically, how are the perceptions of architecture and place defined by the Harlem community, particularly within the corridors between the campuses of City College of New York and the Harlem School of the Arts?

PUBLICATIONS



AMERICAN CITY INTERRUPTED: WHAT SPONTANEOUS INTERVENTIONS CAN TEACH US ABOUT TAKING BACK THE CITY

BY: TONI L. GRIFFIN

The J. Max Bond Center was represented in the 13th International Architecture Exhibition at the Venice Biennale that opened in Venice, Italy on August 29, 2012.

The J. Max Bond Center's Director and iFUD Board member, Toni L. Griffin, contributed research and an essay to the U.S Pavilion. Professor Griffin's essay contribution "American City Interrupted: What Spontaneous Interventions Can Teach Us About Taking Back The City" is featured in the August 2012 edition of Architect Magazine, which is devoted entirely to the U.S Pavilion.

On behalf of the U.S State Bureau of Educational and Cultural Affairs, the Institute for Urban Design (iFUD) curated the U.S Pavilion with an exhibit titled, Spontaneous Interventions: Design Actions for the Common Good, featuring 124 urban interventions initiated by architects, designers, planners, artists, and everyday citizens that bring positive change to their neighborhoods and cities. Spontaneous interventions captures one of the most compelling contemporary urban trends, wherein individuals are taking it upon themselves to create projects that expand the amenities, comfort, functionality, inclusiveness, safety, and sustainability of cities.

[Link to online article](#)

WHAT WE ARE READING...

THE SPIRIT LEVEL: WHY GREATER EQUALITY MAKES SOCIETIES STRONGER

BY KATE PICKETT, RICHARD WILKINSON

The Spirit Level, based on thirty years of research, Lay bare the contradictions between material success and social failure in the developed world.

DESIGN AFTER DECLINE: HOW AMERICA REBUILDS SHRINKING CITIES

BY BRENT D. RYAN

In Design After Decline, Brent D. Ryan reveals the fraught and intermittently successful efforts of architects, planners, and city officials to rebuild shrinking cities following mid-century urban renewal.

THE JUST CITY

BY SUSAN S. FAINSTEIN

The concept of the "just city" encourages planners and policymakers to combine a progressive city planners' earlier focus on equity and material well-being with considerations of diversity and participation so as to foster a better quality of urban life within the context of a global capitalist political economy.

BEYOND ZUCCOTTI PARK

EDITED BY RICK BELL, LANCE JAY BROWN, LYNNE ELIZABETH, RON SHIFFMAN

The Occupy Wall Street movement has challenged the physical manifestation of the First Amendment rights to freedom of assembly. Forty social scientists, planners, and architects, explore the use of public space for the exercise of our democratic rights to free expression.



ARCHITECTURE, PLACE, AND PERCEPTION

The J. Max Bond Center, the Spitzer School of Architecture at City College (SSA), the Environmental Psychology department of the CUNY Graduate Center (GC), and the Harlem School of the Arts (HSA) will be developing two original research projects aimed to raise awareness of the design disciplines of architecture, landscape, urban design and planning among African-American and Latino youth.

The project will engage SSA, GC, and HSA students and faculty to investigate the following research questions:

1. What specific factors are limiting minority youth from entering the fields of architecture and allied design disciplines – both in the academy and in the profession?
2. How do people develop their perceptions about architecture and place? From what context do their perceptions originate? Specifically, how are the perceptions of architecture and place defined by the Harlem community, particularly within the corridors between the campuses of City College of New York and the Harlem School of the Arts?

EXHIBITIONS



HERITAGE HEIGHTS VILLAGE COMMERCIAL REVITALIZATION INITIATIVE

August 15 – 30, 2012
Heritage, Health, and Housing
Curator: John Reddick

The exhibit, sponsored by Heritage, Health, and Housing, displayed elevational models and images that detailed the Amsterdam Avenue corridor and showcased existing and planned improvements in the area.

The exhibit curator, John Reddick orchestrated public presentations focused on the area's unique culture, business, and real-estate offerings in an effort to promote the neighborhood's many potential opportunities to brokers and businesses.

RECENTLY PUBLISHED BY FACULTY AFFILIATES

CITY SINK

BY DENISE HOFFMAN BRANDT

CITY-SINK is an investigation of our potential to catalyze urban carbon sequestration reservoirs, or sinks. Combating a common idea of the city as 'unnatural' and reciprocally, that nature is 'un-urban', Hoffman Brandt reframes urban planting as an operative program rather than a scenographic device.

INEFFABLE: ARCHITECTURE, COMPUTATION AND THE INEXPRESSIBLE

BY BRADLEY HORN

'Ineffable' documents a timely and invaluable debate surrounding the use of computational tools in architecture and their effect on the nature of human expression. A distinguished group of architects, educators, and theoreticians discuss both the potential benefits as well as the perils associated with the recent turn to ever increasing computational complexity in contemporary design culture.