

SPITZER SCHOOL of ARCHITECTURE NEWSLETTER

FALL WINTER 2017 2018

From the Classroom to the Professional World

Student Reflections on the CetraRuddy Design Studio

The fall of 2017 marked the second semester of the **CetraRuddy Design Studio in Housing**, giving 2nd-year students in the **MArch I Program** at the **SSA** the opportunity to explore the possibilities of housing design in **Stapleton and Tompkinsville** on the north shore of **Staten Island, New York**. The studio, taught by Professors **FABIAN LLONCH** and **JUNE WILLIAMSON**, is generously sponsored by **JOHN CETRA** and **NANCY RUDDY** of the firm **CetraRuddy Architecture**. In what follows, 3rd-year **MArch** student **NANCY KELLEHER** reflects on the highlights of her experience in the studio in the spring of 2017.

The first CetraRuddy Design Studio in Housing in the spring of 2017 was a great success. The unique opportunity for academic and professional worlds to engage was particularly valuable at this time, as we prepare for our careers after graduation, and our path to licensure. As part of the studio, we learned about CetraRuddy's projects and the structure of the firm. This allowed us to envision our future beyond the classroom.

When we visited the sites of our projects in Staten Island, we discovered just how much opportunity there is for future development. We learned how improvements to the urban infrastructure, particularly to transportation networks, could revitalize the borough. A closer look showed that our sites along the north shore are actually quite well catered to by public transit, but the majority of the island is not, creating a disconnect between



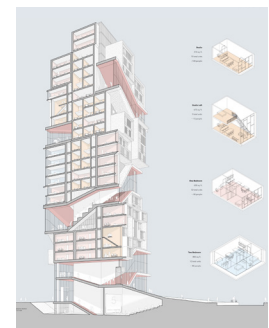
MArch students in the spring 2017 CetraRuddy studio in Staten Island, NY, featuring Nancy Kelleher (second from left) with Profs. June Williamson and Fabian Llonch as well as Eugene Flotteron, AIA, Principal and Director of Architecture at CetraRuddy Architecture. Source: June Williamson

neighborhoods and the greater NYC area.

My studio focused on "How New Yorkers Live Today," which considered housing in relation to demographics, family structure, public health, transportation, and infrastructure. We also looked at emerging trends, such as co-living and intergenerational housing. This research became the driver of many of our projects. For my final project, I collaborated in a team with fellow students **MARCOS GASC** and **MATT SHUFELT** to develop a residential tower that we called "TOVU: Tompkinsville on Vertical Urbanism." Our project was based on the concept of the vertical street, which integrated public space stretching from the ground level to the top of our building.

The more memorable conversations of the

semester were the ones that acknowledged both current needs and challenges, as well the longevity of our designs. The support we received this semester was a reminder that we can all contribute to the future of our profession. CetraRuddy's collaboration has set an example of leadership, and encourages us as students to support the next generation of architecture students.



Nancy Kelleher's team project "TOVU: Tompkinsville on Vertical Urbanism." Source: Marcos Gasc, Nancy Kelleher, and Matt Shufelt

Student News

AWARDS

Nine architecture students have received the new Castagna Architectural Scholarship, which provides a full year's tuition plus funding for study abroad and books. Several recipients studied in Berlin or Barcelona this past summer, and two students were on semester-long exchanges in Spain in the fall. The recipients include BArch students **SOLOMON OH**, **DANIEL BLANC**, and **MARK WEINBERGER**, as well as MArch I students **GLENN BELL**, **GRACE LAVAL**, **KIAMESHA ROBINSON**, **MATTHEW SHUFELT**, **RACHEL WARE**, and **HÅKAN WESTERGREN**.

4th-year BArch student **ESTAFANO TORRES** was awarded the AIA NY Chapter's annual Heritage Ball Scholarship. In October, Interim Dean **GORDON GEBERT** was in attendance along side **ESTAFANO** at the Heritage Ball at Chelesea Piers/Pier Sixty.

5th-year BArch student **SOLOMON OH** received a scholarship for academic excellence from AIA Brooklyn Alum **CHRISTINE**

FACELLA (MLA '17) won an ASLA National Honor Award in the category of analysis and planning for her spring

2017 thesis project with Profs. **CATHERINE SEAVITT NORDENSON** and **MATTHEW SEIBERT**. Her project, *Forests on the Edge*, investigates coastal reforestation in Haiti.

CHRISTINA HERNANDEZ (MArch '15) has been selected for the Center for Architecture's new Civic Leadership Program. Together with nine other young, talented, socially committed professionals, she will participate in a year-long series of programs and events to develop civic leadership skills.

During the summer of 2017, **KAITLIN FAHERTY** (BArch '17) held a full scholarship to study in France as part of the Summer Architecture Program at the Écoles d'Art Américaines de Fontainebleau. At the school's graduation, **KAITLIN** was awarded first prize in architecture. She will return to Fontainebleau in the summer as a teaching assistant in the Summer Architecture Program and hold a residency at the Cité Internationale des Arts in Paris.

To see more recent awards of our students, click [here](#).

MILESTONES

The bees in the SSA's Solar Roofpod have produced eight pounds of honey. Jars of honey from this season's harvest sold



Students in the "Race, Space, and Architecture" seminar in the Capitol.
Source: Marta Gutman

out quickly at our I-Bean Café. Make sure to get yours from the next harvest in 2018.

In collaboration with Prof. **FRANK MELENDEZ**, 1st-year MArch students explored the speculative use of technology in design in a 3D scanning event that included five installations at the SSA. The event included a workshop and presentation by MYND Workshop, a 3D laser scanning company.

The students in the fall Advanced Studio taught by Prof. **SUZAN WINES** worked on social impact startup proposals that explore how architects can apply their strategic thinking and design skills to long-term solutions to problems faced by the 3.2 million Syrian Refugees living in Turkey. In November, students submitted their proposals to the Zahn Innovation Center's 2018 Startup Competition and,

throughout the semester, they met with a wide array of notable professionals working in Social Entrepreneurship and NGOs.

TRAVEL & TRIPS

In the fall of 2017, our students have travelled with their classes locally and nationally. Some highlights include the following trips. 1st-year MArch students in Profs. **MARINA CORREIA**'s and **LOUKIA TSAFOULIA**'s studios visited the Movement Workshop at Brooklyn Studios for Dance, which exposed students to principles of space measurement, body structure, proportions, alignment, and composition through a series of movement sequences. The visit was part of an assignment, which investigated representation techniques and proportional systems across time.



1st-year MArch students with their installation on the SSA's roof, as part of the MYND Workshop 3D scanning event. Source: Marina Correia

Student News (Cont.)

As part of the 1st-year BArch studio curriculum, coordinated by Prof. **JEREMY EDMINSTON**, students travelled to Dia Beacon to study Richard Serra's *Torqued Ellipses* housed in the museum.

Students in Prof. **BRADLEY HORN**'s Advanced Studio, "Intentional Communities: Unintentional Effects," visited Hancock Shaker Village in Maine to examine the legacy of the Shaker Society as part of a broader investigation into the nature of intentional communities today.

Students in Prof. **MARTA GUTMAN**'s seminar, "Race, Space, and Architecture in the USA," visited Washington D.C. and toured the Capitol with **MICHELLE KAYON**, Director of the Project Management Division for the Architect of the Capitol.

For the advanced travel studio led by Prof. **DENISE HOFFMAN-BRANDT**, the MLA program investigated the region between Chicago, IL, and Des Moines, IA, in search of accord in the urban-rural divide. One of their stops was to the farm of Denny Lyle, a thousand acres of soy and corn managed with both digital technology and traditional tools.

Students in Prof.

CHRISTIAN VOLKMANN's Advanced Studio, "Urban Glass House," toured General Glass International's 120,000-square-foot production facility and got a company overview at GGI headquarters in Secaucus, NJ. Their studio developed proposals for glass pavilions, annexes, or other elements for pocket spaces in New York, focusing on research and technical documentation of architectural and spatial effects. The field trip was made possible by the support of the glass manufacturer Arnold Glass.

3rd-year MLA student **BABBIE DUNNINGTON** joined the artist **MARIE LORENZ** for a 24-hour ride on the Tide and Current Taxi to the Staten Island North Shore on the Kill van Kull, the site of Prof. **CATHERINE SEAVITT NORDENSON**'s Fall 2016 MLA studio "Toward an Industrial Ecology."

MArch students visited the Roy and Diana Vagelos Education Center at Columbia University by the firms Diller, Scofidio + Renfro, as part of Prof. **CARL FREDRIK SVENSTEDT**'s Design Seminar for Advanced MArch students.



Students in the MLA travel studio at the farm of Denny Lyle with Prof. Denise Hoffman-Brandt. Source: Denise Hoffman-Brandt

Faculty News

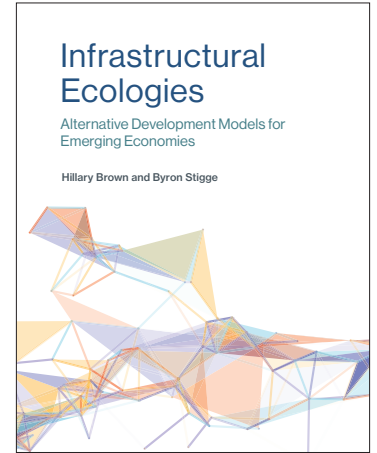
We welcome Visiting Professor **CARL FREDRIK SVENSTEDT** for the fall 2017 semester. His architecture studio, **Carl Fredrik Svenstedt Architect**, is based in Paris, France.

Congratulations to **NANDINI BAGCHEE** who received tenure and was promoted to Associate Professor this fall.

In July 2017, Assistant Professor **AHU AYDOGAN AKSELI** presented the paper "Built Ecologies" as a keynote speaker at CAAD Futures 2017 conference in Istanbul, Turkey. With **ELIZABETH BIDDINGER** in the Chemical Engineering Department at CCNY's Grove School of Engineering, she received a \$40,000 grant from the CUNY Interdisciplinary Research Grant Program to support the continuation of their work on the project "Plant-Based Air Filtration using Engineered Growth Media: Formaldehyde Adsorption Dynamics." She has also been awarded a PSC-CUNY Award for her project "Optimization of Building-Integrated Plant-Based Cassettes for Removing Indoor-Air Pollutants."

MIT Press published Professor **HILLARY BROWN**'s second book, *Infrastructural Ecologies: Alternative Development Models for Emerging Economies*. She presented papers on sustainable infrastructure at conferences at the Wessex Institute, Bristol, UK, and the Sustainable Development Solutions Network, NYC. She was a keynote speaker at the 3rd International Festival of Landscape Architecture in Sydney, Australia.

Adjunct Assistant Professor **MARINA CORREIA** was the exhibition architect for the show *After the Fact*, focusing on the uses of



Infrastructural Ecologies: Alternative Development for Emerging Economies by Hillary Brown.

propaganda, at the Städtische Galerie im Lenbachhaus und Kunstbau in Munich, Germany.

Adjunct Professor **ALEJANDRO DE CASTRO MAZARRO** exhibited his research, developed with a group of students from Columbia University, at the Chilean Architecture Biennale.

Professor **MARTA GUTMAN**'s 2014 book, *A City for Children: Women, Architecture, and the Charitable Landscapes of Oakland, 1850-1950*, has been awarded the the Society of Architectural Historians' prestigious 2017 Spiro Kostof Award. She published the article "New Deal New York: A Living Legacy for Children" in the fall 2017 newsletter of *The Living New Deal*. She spoke at Richard Plunz's book launch for *City Rifts* at Columbia University and she organized and moderated a roundtable at the 2017 Conference of the Society for American City and Regional Planning History that also included Associate Professor **CATHERINE SEAVITT NORDENSON** and Adjunct Professor **ALEJANDRO DE CASTRO MAZARRO**.

Assistant Professor

DEAN'S MESSAGE

The past months have been an exciting and dynamic time for the SSA. I am pleased to report that, following the National Architectural Accrediting Board's evaluation of our professional BArch and MArch programs in the spring of 2017, these programs have been reaccredited with no stipulations for eight years. This is the longest period of accreditation possible. Thanks go to our faculty and staff, especially **FABIAN LLONCH**, **JUNE WILLIAMSON**, **BRAD HORN**, **JULIO SALCEDO-FERNANDEZ**, **HANNAH BORGESON**, **MICHAEL MILLER**, **ERICA WSZOLEK**, **SARA MORALES**, **ARNALDO MELENDEZ**, and **CAMILLE HALL**.

In the fall, the SSA's atrium gallery hosted the successful exhibit, *Harry Seidler: Painting Toward Architecture*. The show was organized by Prof. **JEREMY EDMINSTON** who worked in Seidler's office in Australia from 1983 to 1991. This winter our gallery hosted another show, *Five Artists + Architecture*. Curated by Prof. **LANCE JAY BROWN**, the exhibition features the artwork of five members of the SSA's full-time and part-time faculty: **ALAN FEIGENBERG**, **DANIEL HAUBEN**, **DAVID JUDELSON**, **IRMA OSTROFF**, and **ALBERT VECERKA**.

Finally, I was honored to participate in two benchmark celebrations. Last May, I joined SSA colleagues and students at CCNY's Presidential Awards Gala to celebrate the college's 170th anniversary. In November, I attended the co-naming ceremony of the southeast corner of St. Nicholas Avenue and West 162nd Street, named J. Max Bond, Jr. Way. The late **J. MAX BOND, JR.** was a much beloved former dean of our school, with whom I had the pleasure of working, and he is the namesake of our research and design center, the J. Max Bond Center on Design for the Just City.

Gordon Gebert
Interim Dean

Faculty News (Cont.)

FRANK MELENDEZ held a 2017 Artist-In-Residence Fellowship at the MacDowell Colony, in Peterborough, NH. Additionally, with BArch students **ZARA TAMTON**, **HANNAH DEEGAN**, **BETHANY HERMAN**, and MArch student **MARCOS GASC**, he was selected to exhibit two projects for the *Reshape 17: Wearable Technology-Programmable Skins* show, which is travelling throughout Europe, beginning in Barcelona, Spain.

Associate Professor **CATHERINE SEAVITT NORDENSON**'s essay "Retrench/Rise Up" appeared in issue 6 of *LA+ RISK* (September 2017). Her essay "Regional Solutions for Adaptive Coastal Landscapes," co-authored with **GUY NORDENSON**, was published in the Chinese journal *Time + Architecture*, issue 4 (Fall 2017). Her Yangtze River Delta Project was on view until 15 January 2018 in Shanghai, China, at the *Shanghai Urban Space and Art Season 2017* exhibition, which was curated by **STEFANO BOERI**.



Catherine Seavitt Nordenson's Yangtze River Delta Project on exhibit in China. Source: Catherine Seavitt Nordenson

Lecturer **MATTHEW SEIBERT** recently traveled to the annual American Society of Landscape Architects conference in Los Angeles to accept two national ASLA Honor Awards for both professional and academic work. He received an ASLA Honor Award in the Analysis and Planning category for his work on *The Olana Strategic Landscape Design Plan: Restoring an American Masterpiece*, a project he worked on while at Nelson Byrd Woltz Landscape Architects.

Associate Professor **JUNE WILLIAMSON**'s article "Dead and Dying Shopping Malls, Re-inhabited" was published in the Sept-Oct 2017 issue of *AD*. Her book *Retrofitting Suburbia* was recently included on a shortlist of "Must-Read Books About Cities by Women" in an article on *Curbed.com* titled "Mansplaining the City." She has been quoted in relationship to her ideas about suburbia in *Politico*, *Hour Detroit*, and *Business Insider*.

I-Beam Design, the firm of Adjunct Associate Professor **SUZAN WINES** and **AZIN VALY**, was included among the city's best architecture firms of 2017 in *New York Magazine* and selected as one of the finalists for the 2017 American Architecture Firm of the Year Award for a loft project in Chelsea. Stellae International has started to move into their new headquarters in Melville, LI designed by I-Beam.

For more information about the Spitzer School of Architecture and its programs in Bachelor of Architecture, Masters of Architecture, Masters of Landscape Architecture, Masters of Urban Design, Masters of Urban Sustainability, and the J. Max Bond Center, please visit:

ssa.ccny.cuny.edu